

Jeanneau 36.2

Designer:

Jeanneau Design Team & Jacques Fauroux

Specifications

- Overall length: 36' 1"
- Hull length: 34' 11"
- Length on waterline: 30' 6"
- Overall beam: 12' 5"
- Draft deep keel: 6' 3"
- Draft shallow keel: 4' 6"
- Weight: 12, 320 lbs
- Deep keel weight: 3, 410 lbs
- Shallow keel weight: 4, 136 lbs
- Cabins: 2 / 3
- Berth: 5 / 7 persons
- Engine: 27 hp
- Fuel capacity: 26 US gallons
- Water capacity: 78 US gallons
- Mainsail: 288 sq ft
- Furling genoa: 371 sq ft
- Spinnaker: 796 sq ft



FROM A HISTORY of great sailing prowess mated to the finest production quality, the new 36.2 adds a dimension of unmatched livability. The Jeanneau Design Team has remarkably combined a queen-size quarter cabin with one of the most welcoming salons afloat. A vast galley, tremendous head and excellent nav station are just a few of the features found in this striking sloop.

The Jeanneau 35 is strongly built for *offshore sailing*. She incorporates a carefully, hand laid up, structural stringers (not pan linings) and perimeter bonded bulkheads, among other features, to insure the utmost in structural strength and rigidity. The Jeanneau represents your best choice in a moderate displacement, good all-around performance cruiser.

On deck...

She features wide walk around areas with inboard shrouds promoting close sheeting for going to windward and easy access forward. Even the little details are taken care of, such as providing for a windlass in a protected compartment to protect it from harmful salt water spray and to clear the deck area for easy sail handling. ...The cockpit is extremely generous with a table incorporated with the pedestal. All controls are led to the forward

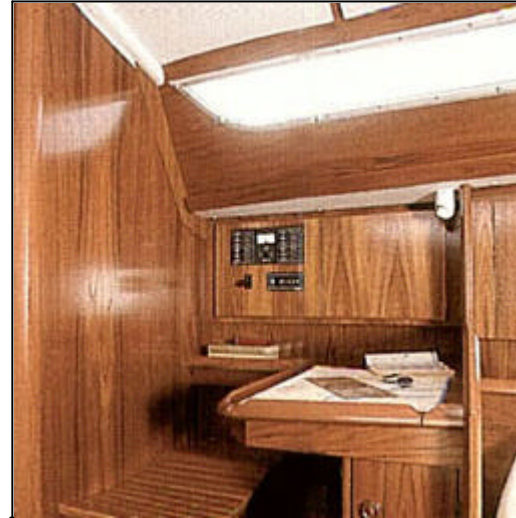
end of the cockpit. ...Sail handling is a breeze with included furling genoa and your choice of mainsail arrangements. Even the sheet winches are located forward so that, with an autopilot, one person can completely manage and even tack the boat from the protection of a dodger. Now you can have many of the advantages of a pilot house with none of the disadvantages!

Main saloon...

Below, there is an oversized, wrap around dinette with opposing settee providing comfortable seating for up to 8.

The Navigation station...

You have plenty of room for a host of electronics--there's even room to set up your computer and have a mini-office away from work!



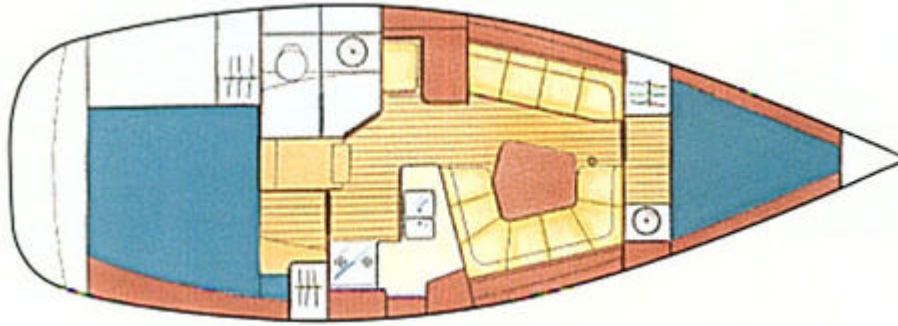
The Galley...

The galley is "L" shaped and to starboard. It includes double SS sinks, pressure H/C water, a gas stove with oven, hidden trash can and abundant storage.

Sleeping cabins...

The forward cabin features a full sized berth, excellent ventilation and a vanity area with a wash basin. Aft, you have a generous awthwartships queen sized berth. In addition, the settee serves as a single and the dinette is a single with the option to make it a pull out double.





Jeanneau 36.2 - Cabin Arrangement



JEANNEAU AMERICA, Inc.
105 Eastern Avenue, Suite 202 Annapolis, MD 21403 USA
tel: 1-410-280-9400 fax: 1-410-280-9401

Copyright Jeanneau America, Inc.